



2025

# AWCINSW AWARDS of EXCELLENCE

SATURDAY 20TH SEPTEMBER  
DOLTONE HOUSE

THE PREMIUM PLATFORM IN NSW FOR THE WALL & CEILING INDUSTRY TO REWARD AND RECOGNISE INDUSTRY EXCELLENCE.



YOUR INDUSTRY, YOUR ASSOCIATION, YOUR AWARDS.



# 2025 AWCINSW AWARDS of EXCELLENCE SPONSORS



THANK YOU FOR YOUR SUPPORT!

YOUR INDUSTRY, YOUR ASSOCIATION, YOUR AWARDS.



## PRESIDENT'S WELCOME

*As President of the Association of Wall & Ceiling Industries in NSW, it is a great privilege for me to welcome you all to the AWCINSW Awards for Excellence 2025.*

We gather today at Doltone House to celebrate the exceptional achievements of our wall & ceiling contractors in NSW. Through this celebration it is critical that we acknowledge and reward the spirit of innovation, collaboration, and dedication that defines our industry here in New South Wales.

The AWCINSW Awards for Excellence program provides our industry the opportunity to acknowledge the resilience and ingenuity of our hard-working contractors. Your skill and expertise in delivering projects that set new benchmarks for quality, and creativity is truly inspirational. Your commitment to excellence elevates the standards of our profession and inspires the next generation of wall and ceiling specialists.

The work submitted this year through our Awards for Excellence program a testament to the skill, teamwork, and leadership that drive our industry forward. From complex commercial builds to transformative residential projects, each entry reflects the expertise and passion of you, the contractors & business owners. It is also a reflection on the commitment of your crew that you coordinate.

On behalf of the wall & ceiling industry in NSW, AWCINSW commend you for your pursuit of perfection in every detail, and for the pride you take in your craft.

Of course, it is important that AWCINSW acknowledge the invaluable support of our sponsors, whose generosity makes this event possible. Thank you to CSR Gyprock, Rondo, DPO, FastStud, SGP Distribution, Armstrong Ceiling Solutions, Siniat & Ramset for your ongoing commitment to our Association and our industry. Your partnership strengthens our community and enables us to recognise and reward the best among us.

To all the 2025 finalists and award recipients: congratulations. Your achievements are a source of inspiration and a benchmark for us all. I encourage everyone in our industry to celebrate not just the winners, but the collective progress and excellence we share as an industry.

Thank you for your dedication, your hard work, and your passion for building a stronger, more vibrant future for the wall and ceiling industry in NSW.

Sincerely,  
**Shane Croker**  
PRESIDENT, AWCINSW

SPONSORS .....	2	APPRENTICE AWARDS OF EXCELLENCE .....	19
PRESIDENT'S WELCOME .....	3	COMMERCIAL PROJECTS .....	20
RESIDENTIAL PROJECTS .....	4	COMMERCIAL DECORATIVE LININGS.....	26
RESIDENTIAL SPECIALIST LININGS .....	9	COMMERCIAL RESTORATION.....	27
RESIDENTIAL DECORATIVE .....	12	COMMERCIAL FACADES.....	28
RESIDENTIAL HERITAGE .....	15	COMMERCIAL FIBROUS PLASTERWORK.....	31
RESIDENTIAL RESTORATION .....	16	COMMERCIAL SPECIALIST LININGS.....	32
RESIDENTIAL VENETIAN .....	18	CONTACT AWCINSW .....	36





# RESIDENTIAL PROJECTS

RESIDENTIAL  
NOVA COAST PLASTERING  
**MENA STREET**



RESIDENTIAL  
G&K LOONEY  
**GUNARU**



RESIDENTIAL  
PRECISION PLASTER LININGS  
**ELDORADO**



RESIDENTIAL  
BIETOLA INTERIORS  
**ELIZABETH BAY HANDRAIL**



RESIDENTIAL  
BRANCATO LININGS  
**BOOTH ROAD**



RESIDENTIAL  
MORABITO INTERIOR LININGS PTY LTD  
**CUSTOM BUILD**



RESIDENTIAL  
DREAM LININGS  
**ALMA HOUSE**



RESIDENTIAL  
WILK INTERIORS  
**ANNANDALE**



RESIDENTIAL  
PRECISION INTERIOR LININGS  
**HIGH VIEW**



RESIDENTIAL  
NORTHEY PLASTERING  
**RAVEN**





RESIDENTIAL  
REGNO PLASTERER  
PINDARI HOUSE



RESIDENTIAL  
NORTHEY PLASTERING  
ST LEONARDS CREEK



RESIDENTIAL  
REGNO PLASTERER  
HUNTER AVE



RESIDENTIAL  
PARAMOUNT PROJECTS  
PHILIP BAY RESIDENCE



RESIDENTIAL  
SOUTHERN HIGHLANDS INTERIOR LININGS  
FERWIN



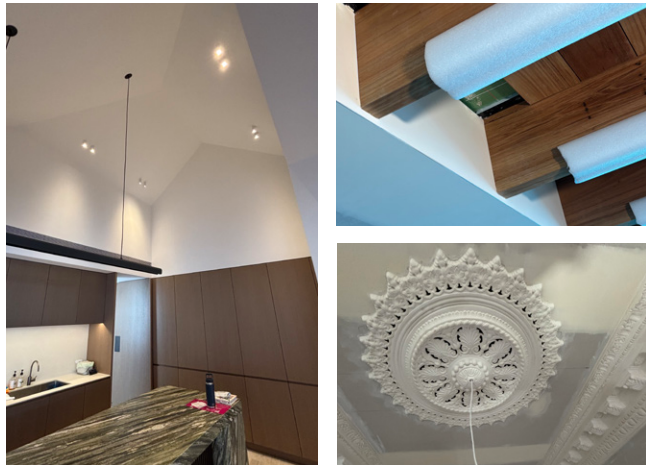
RESIDENTIAL  
HINTON LININGS  
YUME - CARINGBAH



RESIDENTIAL  
ABSOLUTLEY PLASTERED WITH LANCE  
TARA DOWNS



RESIDENTIAL  
BIETOLA INTERIORS  
GLEBE RESIDENCE



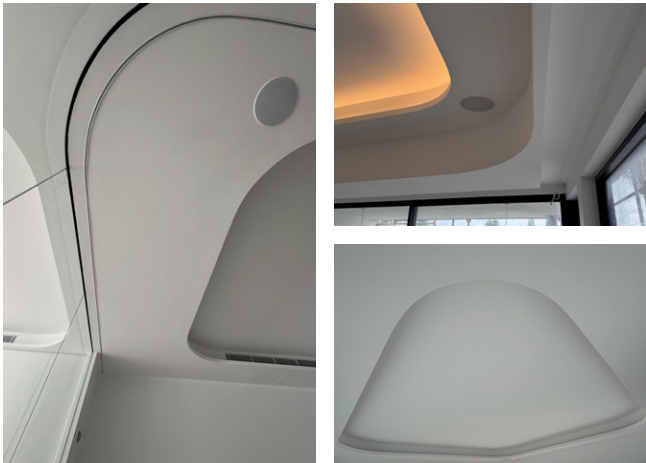
RESIDENTIAL  
DREAM LININGS  
ZETR HOUSE



RESIDENTIAL  
MIRAGE INTERIORS  
CARINGBAH SOUTH



RESIDENTIAL  
DREAM LININGS  
CURL CURL BEACH HOUSE



RESIDENTIAL  
GREYWOLF PLASTERING  
AUGUSTA





**RESIDENTIAL**  
**BIETOLA INTERIORS**  
**VAUCLUSE**



**RESIDENTIAL**  
**HINTON LININGS**  
**MK POTTS POINT**



**RESIDENTIAL**  
**MIRAGE INTERIORS**  
**DARLING POINT**



**RESIDENTIAL**  
**HINTON LININGS**  
**SOLSTICE**



**RESIDENTIAL**  
**DREAM LININGS**  
**ARTE NEWPORT**



**RESIDENTIAL**  
**HINTON LININGS**  
**LAYDEN BONDI**





**RESIDENTIAL  
SPECIALIST LININGS**

**LAWCINSW**  
Association of  
WALL & CEILING  
INDUSTRIES

**RESIDENTIAL**  
**HINTON LININGS**  
**MK QUEEN STREET**



**RESIDENTIAL**  
**HINTON LININGS**  
**BELLEVUE HILL**



**RESIDENTIAL SPECIALIST LININGS**  
**BIETOLA INTERIORS**  
**ELIZABETH BAY HANDRAIL**



**RESIDENTIAL SPECIALIST LININGS**  
**DREAM LININGS**  
**ALMA HOUSE**





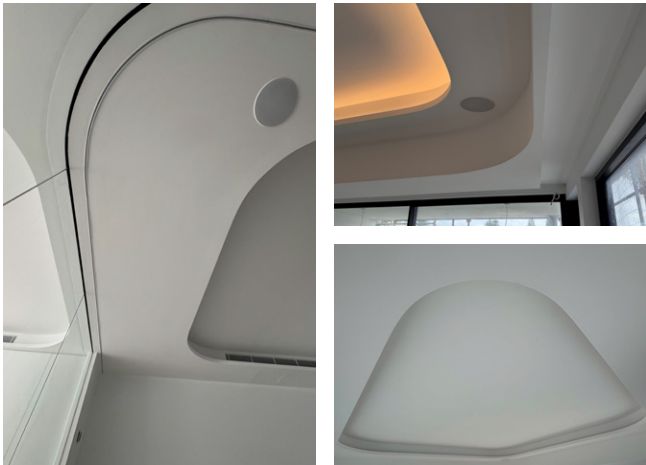
RESIDENTIAL SPECIALIST LININGS  
PRECISION INTERIOR LININGS  
HIGH VIEW



RESIDENTIAL SPECIALIST LININGS  
WILK INTERIORS  
ANNANDALE



RESIDENTIAL SPECIALIST LININGS  
DREAM LININGS  
CURL CURL BEACH HOUSE



RESIDENTIAL SPECIALIST LININGS  
PARAMOUNT PROJECTS  
PHILIP BAY RESIDENCE



RESIDENTIAL SPECIALIST LININGS  
NOVA COAST PLASTERING  
MENA STREET



RESIDENTIAL SPECIALIST LININGS  
DREAM LININGS  
ZETR HOUSE



RESIDENTIAL SPECIALIST LININGS  
BIETOLA INTERIORS  
VAUCLUSE RESIDENCE



RESIDENTIAL SPECIALIST LININGS  
MIRAGE INTERIORS  
DARLING POINT



RESIDENTIAL SPECIALIST LININGS  
BRANCATO LININGS  
BOOTH ROAD



THANK YOU FOR YOUR SUPPORT!







# RESIDENTIAL DECORATIVE

RESIDENTIAL DECORATIVE  
DOPE DÉCOR  
HUNTERS HILL



RESIDENTIAL DECORATIVE  
BRANCATO LININGS  
BOOTH ROAD



RESIDENTIAL DECORATIVE  
BIETOLA INTERIORS  
ELIZABETH BAY HANDRAIL



RESIDENTIAL DECORATIVE  
DREAM LININGS  
ALMA HOUSE



RESIDENTIAL DECORATIVE  
PRECISION INTERIOR LININGS  
HIGHVIEW



RESIDENTIAL DECORATIVE  
WILK INTERIORS  
ANNANDALE



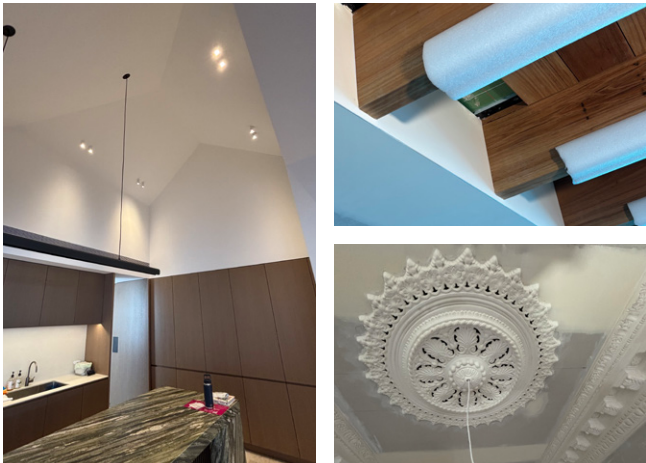
RESIDENTIAL DECORATIVE  
DREAM LININGS  
CUSTOM STAMP FIREPLACE



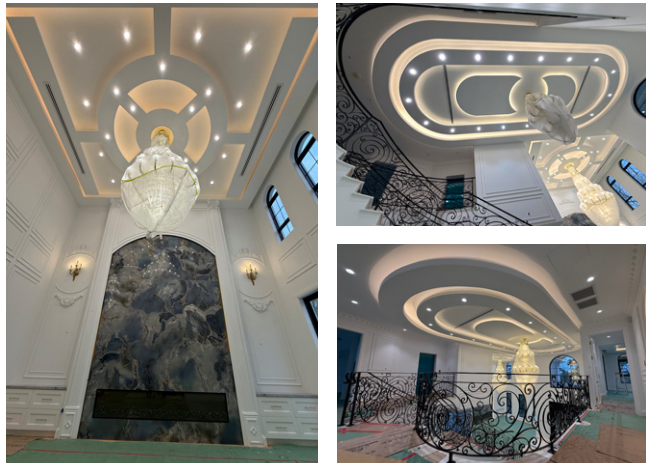
RESIDENTIAL DECORATIVE  
DREAM LININGS  
ZETR CUSTOM FIREPLACE



RESIDENTIAL DECORATIVE  
BIETOLA INTERIORS  
GLEBE RESIDENCE



RESIDENTIAL DECORATIVE  
REGNO PLASTERER  
HUNTER AVE





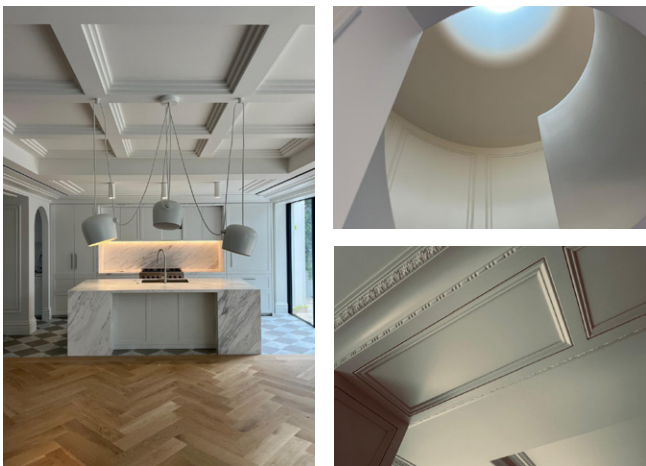
RESIDENTIAL DECORATIVE  
HINTON LININGS  
**LAYDEN BONDI**



RESIDENTIAL DECORATIVE  
HINTON LININGS  
**MK QUEEN STREET**



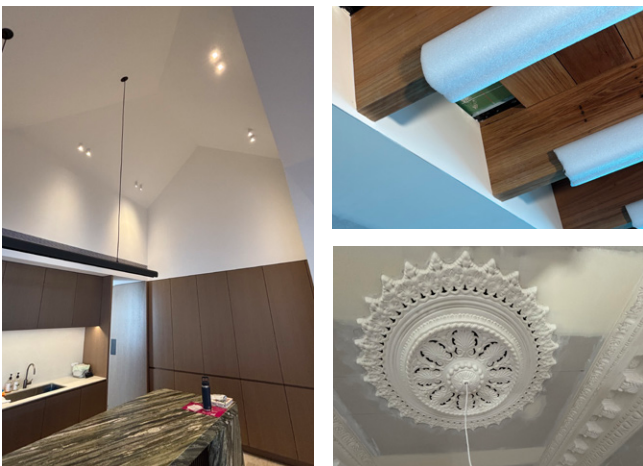
RESIDENTIAL DECORATIVE  
HINTON LININGS  
**BELLEVUE HILL**



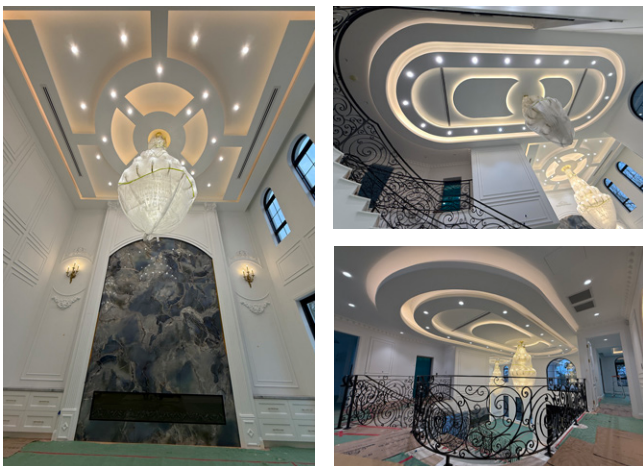
RESIDENTIAL DECORATIVE  
BIETOLA INTERIORS  
**VAUCLUSE**



RESIDENTIAL HERITAGE  
BIETOLA INTERIORS  
**GLEBE RESIDENCE**



RESIDENTIAL HERITAGE  
REGNO PLASTERER  
**HUNTER AVE**



RESIDENTIAL DECORATIVE  
HINTON LININGS  
**MK POTTS POINT**



RESIDENTIAL HERITAGE  
HINTON LININGS  
**LAYDEN BONDI**







**AWCINSW**  
Association of  
 WALL & CEILING  
 INDUSTRIES

# RESIDENTIAL RESTORATION



**RESIDENTIAL RESTORATION**  
**BIETOLA INTERIORS**  
**ELIZABETH BAY POTTS**



**RESIDENTIAL RESTORATION**  
**DREAM LININGS**  
**ALMA HOUSE**



**RESIDENTIAL RESTORATION**  
**PRECISION INTERIOR LININGS**  
**HIGHVIEW**



**RESIDENTIAL RESTORATION**  
**WILK INTERIORS**  
**ANNANDALE**



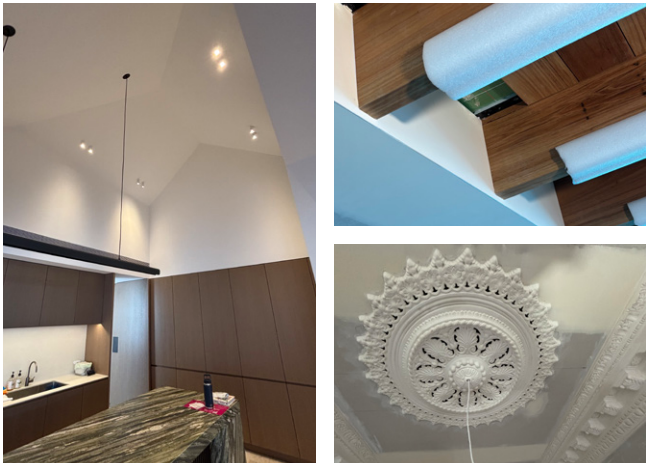
**RESIDENTIAL RESTORATION**  
**DREAM LININGS**  
**CUSTOM STAMP FIREPLACE**



**RESIDENTIAL RESTORATION**  
**DREAM LININGS**  
**ZETR CUSTOM FIREPLACE**



**RESIDENTIAL RESTORATION**  
**BIETOLA INTERIORS**  
**GLEBE RESIDENCE**





# RESIDENTIAL VENETIAN

**RESIDENTIAL VENETIAN**  
**DREAM LININGS**  
**ALMA HOUSE**



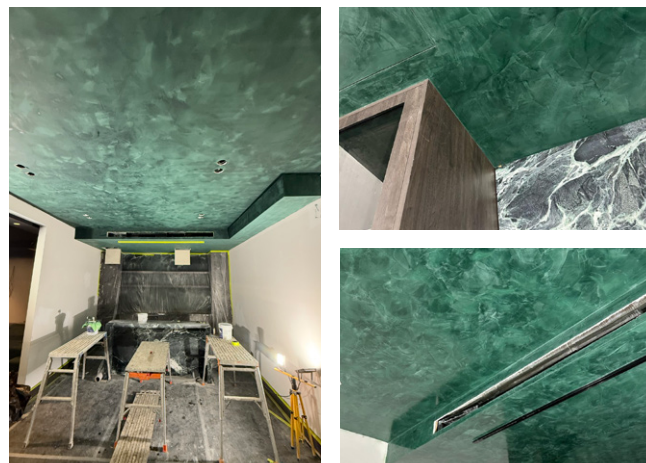
**RESIDENTIAL VENETIAN**  
**DREAM LININGS**  
**CUSTOM FIREPLACE**



**RESIDENTIAL VENETIAN**  
**DREAM LININGS**  
**ZETR CUSTOM**  
**FIREPLACE**



**RESIDENTIAL VENETIAN**  
**MAJESTIC INTERIORS**  
**GRASSELLO POLISHED PLASTER**



**RESIDENTIAL VENETIAN**  
**DOPE DÉCOR**  
**HUNTERS HILL**



# APPRENTICE AWARDS FOR EXCELLENCE

**MATHEW BYRNE**  
**DREAM**  
**LININGS**



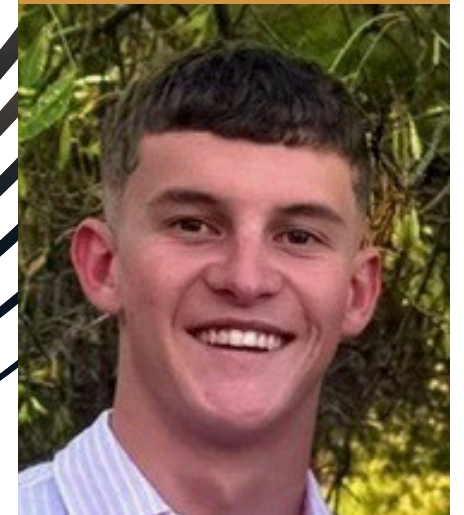
**APPRENTICE AWARD**  
**FOR EXCELLENCE**  
**SYDNEY/**  
**SOUTH COAST**  
**REGION**

**BEHN SWATTEN**  
**BEYOND PLASTERING**  
**SOLUTIONS**



**APPRENTICE AWARD**  
**FOR EXCELLENCE**  
**NORTHERN RIVERS/**  
**NEW ENGLAND**  
**REGION**


**BOB MCEWEN**  
**WYKAMPS**  
**PLASTERING**



**APPRENTICE AWARD**  
**FOR EXCELLENCE**  
**CENTRAL WEST**  
**RIVERINA**  
**REGION**

**CONGRATULATIONS TO ALL OUR AWCINSW FINALISTS!**





# COMMERCIAL PROJECTS

COMMERCIAL  
HINTON LININGS  
KATE NIXON DESIGN STUDIO



COMMERCIAL  
REGNO PLASTERER  
CHURCH STREET



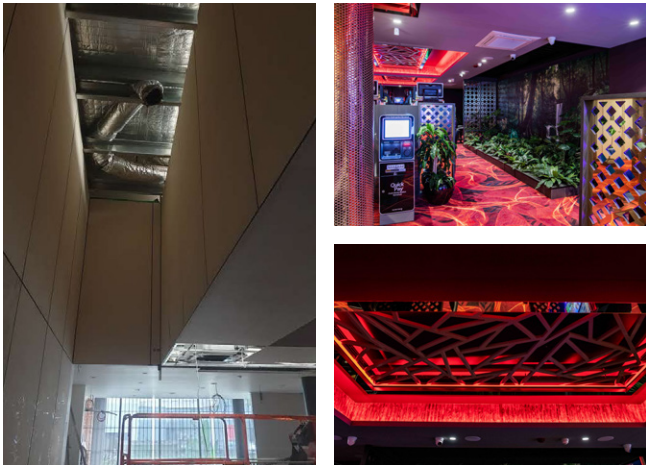
COMMERCIAL  
MIRAGE INTERIORS  
PASADENA



COMMERCIAL  
MIRAGE INTERIORS  
FINGAL BAY SPORTS CLUB



COMMERCIAL  
MIRAGE INTERIORS  
ZETLAND HOTEL



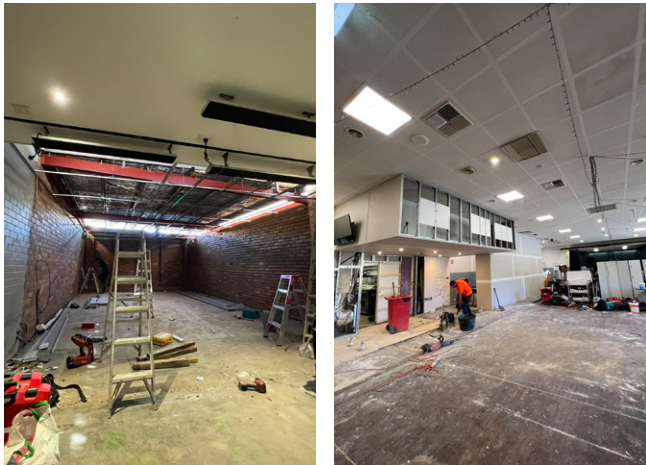
COMMERCIAL  
CREATIVE PLASTERERS  
SUNDANCER HOMES  
SHOWROOM ALBURY



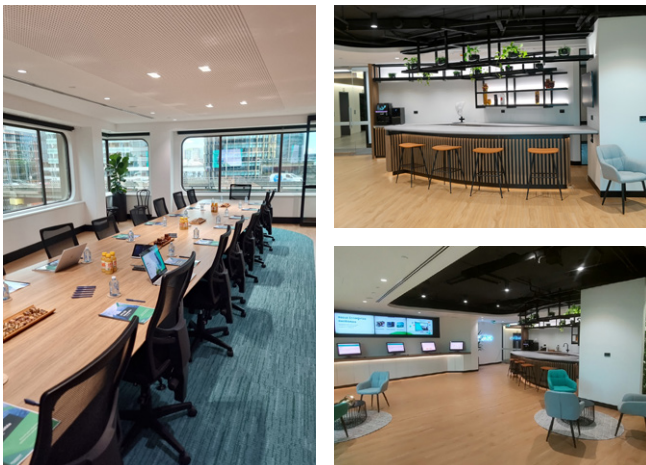
COMMERCIAL  
MQ CONSTRUCTIONS  
HOTEL REALM,  
OSTANI BAR AND BEER GARDEN



COMMERCIAL  
MIRAGE INTERIORS  
CLUB LITHGOW



COMMERCIAL  
ENTRAX COMMERCIAL INTERIORS FITOUTS  
READINOW SYDNEY



COMMERCIAL  
PRECISION PLASTER LININGS  
ST MONICAS  
ADMINISTRATION BUILDING





COMMERCIAL  
MQ CONSTRUCTIONS  
MED RESTAURANT,  
BURBURY HOTEL CANBERRA



COMMERCIAL  
MIRAGE INTERIORS  
BUSBY FIRE STATION



COMMERCIAL  
UNITED PLASTERING CONTRACTORS  
BALLINA SHIRE COUNCIL



COMMERCIAL  
G&K LOONEY  
KINROSS WOOLSHED HOTEL



COMMERCIAL  
JR PRIME  
KLOSTER HYUNDAI



COMMERCIAL  
JA CROCKETT PTY LTD  
NATURA INGENIA CLUBHOUSE



COMMERCIAL  
G&K LOONEY  
CROOKWELL MULTIPURPOSE  
AQUATIC & ACTIVES CENTRE



COMMERCIAL  
CREATIVE PLASTERERS  
JACOB TOYOTA WODONGA



COMMERCIAL  
HINTON LININGS  
THE JUNIORS KINGSFORD



COMMERCIAL  
JA CROCKETT PTY LTD  
CORLETTE ST COMMERCIAL



COMMERCIAL  
JA CROCKETT PTY LTD  
ALLIANZ 3 STOREY FITOUT



COMMERCIAL  
JR PRIME  
MACQUARIE COLLEGE  
FOUNDATION





**COMMERCIAL**  
**UNITED PLASTERING CONTRACTORS**  
**AUREUS STAGE 1,2,3,4 & 5**



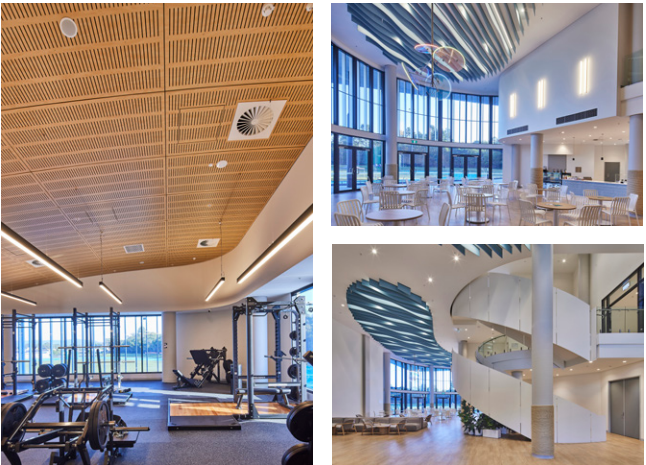
**COMMERCIAL**  
**G&K LOONEY**  
**UNSW BIOMEDICAL SCIENCE BUILDING**



**COMMERCIAL**  
**JR PRIME**  
**GOSFORD REGIONAL LIBRARY**



**COMMERCIAL**  
**JA CROCKETT**  
**HUNTER REGIONAL SPORTS CENTRE GLENDALE**



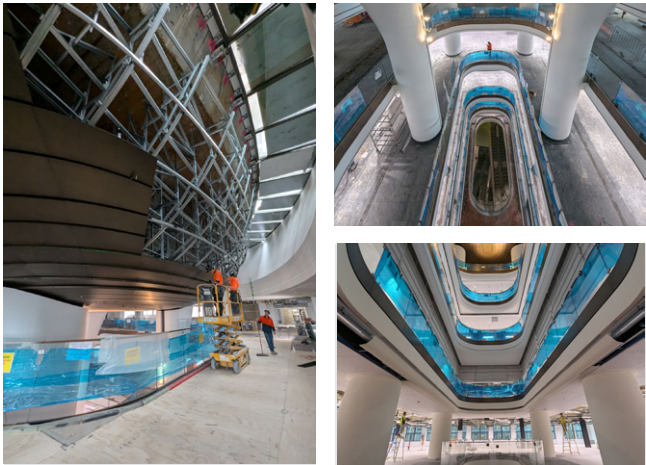
**COMMERCIAL**  
**JR PRIME**  
**GLEN WILLOW CENTRE OF EXCELLENCE**



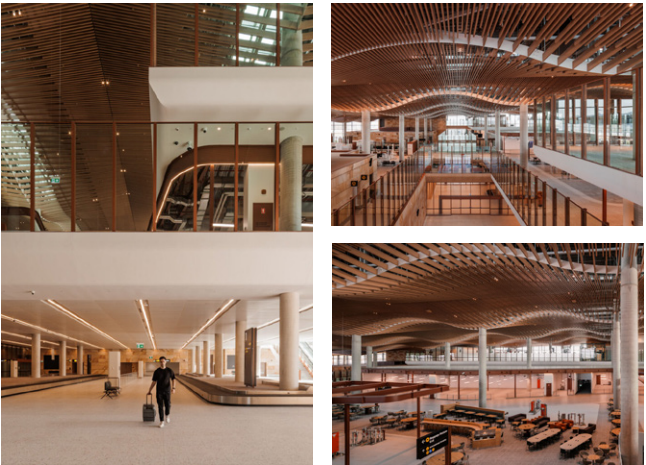
**COMMERCIAL**  
**JA CROCKETT PTY LTD**  
**NEWCASTLE GRAMMAR SCHOOL PARK CAMPUS STAGE 1**



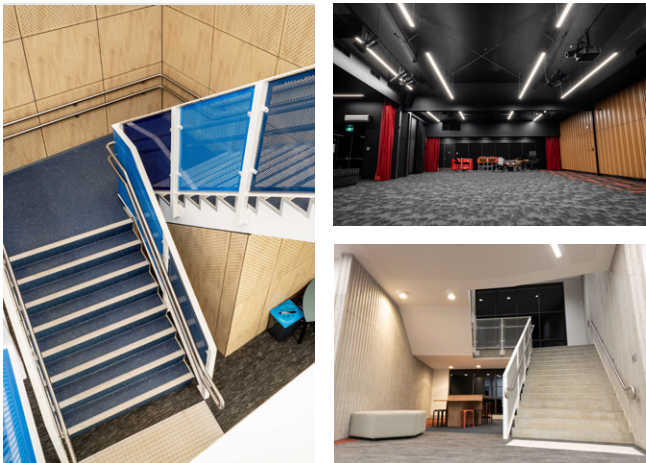
**COMMERCIAL**  
**SALEX CEILINGS**  
**101-121 CASTLEREAGH**



**COMMERCIAL**  
**AUSTRAL INTERIORS**  
**WESTERN SYDNEY INTERNATIONAL AIRPORT**



**COMMERCIAL**  
**CREATIVE PLASTERERS**  
**TRINITY ANGLICAN COLLEGE**



**COMMERCIAL**  
**MNS INTERIORS PTY LTD**  
**DPS FIT OUT**



THANK YOU FOR YOUR SUPPORT!







**AWCINSW**  
Association of  
WALL & CEILING  
INDUSTRIES

# COMMERCIAL DECORATIVE LININGS

COMMERCIAL DECORATIVE LININGS  
G&K LOONEY  
**UNSW BIOMEDICAL  
SCIENCE BUILDING**



COMMERCIAL DECORATIVE LININGS  
G&K LOONEY  
**CROOKWELL MULTIPURPOSE  
AQUATIC & ACTIVES CENTRE**



COMMERCIAL DECORATIVE LININGS  
HINTON LININGS  
**KATE NIXON DESIGN STUDIO**



COMMERCIAL DECORATIVE LININGS  
G&K LOONEY  
**KINROSS WOOLSHED HOTEL**




**AWCINSW**  
Association of  
WALL & CEILING  
INDUSTRIES

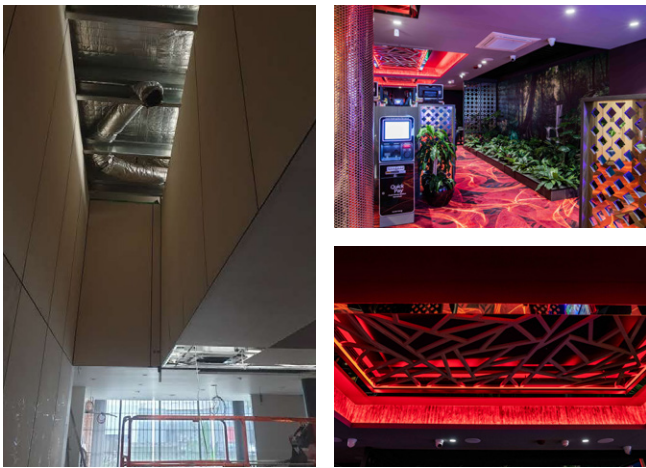
# COMMERCIAL RESTORATION



COMMERCIAL DECORATIVE LININGS  
UNITED PLASTERING CONTRACTORS  
**BALLINA SHIRE COUNCIL**



COMMERCIAL RESTORATION  
MIRAGE INTERIORS  
**ZETLAND HOTEL**



COMMERCIAL RESTORATION  
MNS INTERIORS PTY LTD  
**DPS FIT OUT**





# COMMERCIAL FACADES

## 2025 AWCINSW AWARDS of EXCELLENCE SPONSORS

COMMERCIAL FACADES  
JR PRIME  
**KLOSTER HYUNDAI**



COMMERCIAL FACADES  
G&K LOONEY  
**KINROSS WOOLSHED HOTEL**



COMMERCIAL FACADES  
G&K LOONEY  
**CROOKWELL MULTIPURPOSE  
AQUATIC & ACTIVES CENTRE**



THANK YOU FOR YOUR SUPPORT!

YOUR INDUSTRY, YOUR ASSOCIATION, YOUR AWARDS.





COMMERCIAL FACADES  
UNITED PLASTERING CONTRACTORS  
**BALLINA SHIRE COUNCIL**



COMMERCIAL FACADES  
JR PRIME  
**GOSFORD REGIONAL LIBRARY**



COMMERCIAL FACADES  
JR PRIME  
**GLEN WILLOW CENTRE OF EXCELLENCE**



COMMERCIAL FACADES  
JA CROCKETT PTY LTD  
**HUNTER REGIONAL SPORTS CENTRE GLENDALE**



COMMERCIAL FIBROUS PLASTERWORK  
THORNE DECORATIVE PLASTERWORK  
**ELIZABETH BAY**



COMMERCIAL FIBROUS PLASTERWORK  
THORNE DECORATIVE PLASTERWORK  
**OCEAN STREET**



COMMERCIAL FACADES  
JA CROCKETT PTY LTD  
**NEWCASTLE GRAMMAR SCHOOL PARK CAMPUS STAGE 1**



COMMERCIAL FIBROUS PLASTERWORK  
THORNE DECORATIVE PLASTERWORK  
**MOSMAN**



COMMERCIAL FIBROUS PLASTERWORK  
ALLPLASTA  
**KENTHURST**





COMMERCIAL FIBROUS PLASTERWORK  
ALLPLASTA  
**BRIGHTON HOTEL**



COMMERCIAL FIBROUS PLASTERWORK  
BAILEYS INTERIORS  
**SCOTS COLLEGE - THE JOHN CUNNINGHAM STUDENT CENTRE**



COMMERCIAL SPECIALIST LININGS  
MIRAGE INTERIORS  
**BUSBY FIRE STATION**



COMMERCIAL SPECIALIST LININGS  
G&K LOONEY  
**KINROSS WOOLSHED HOTEL**



COMMERCIAL SPECIALIST LININGS  
UNITED PLASTERING CONTRACTORS  
**BALLINA SHIRE COUNCIL**



COMMERCIAL SPECIALIST LININGS  
CREATIVE PLASTERERS  
**SUNDANCER HOMES SHOWROOM ALBURY**



COMMERCIAL SPECIALIST LININGS  
JR PRIME  
**KLOSTER HYUNDAI**



COMMERCIAL SPECIALIST LININGS  
JR PRIME  
**MACQUARIE COLLEGE FOUNDATION**



COMMERCIAL SPECIALIST LININGS  
JR PRIME  
**GOSFORD REGIONAL LIBRARY**





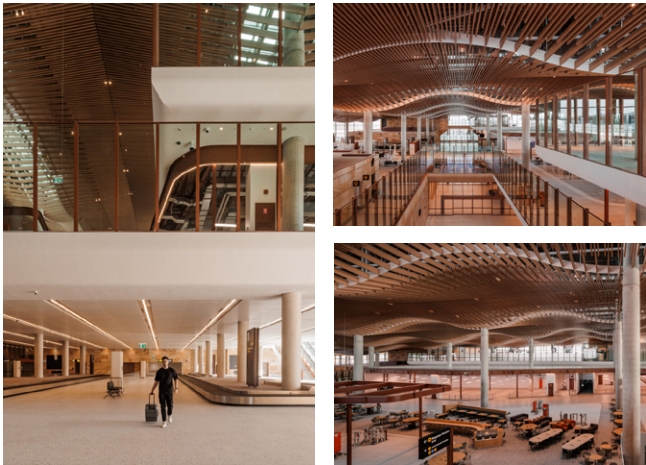
**COMMERCIAL SPECIALIST LININGS**  
**JR PRIME**  
**GLEN WILLOW CENTRE**  
**OF EXCELLENCE**



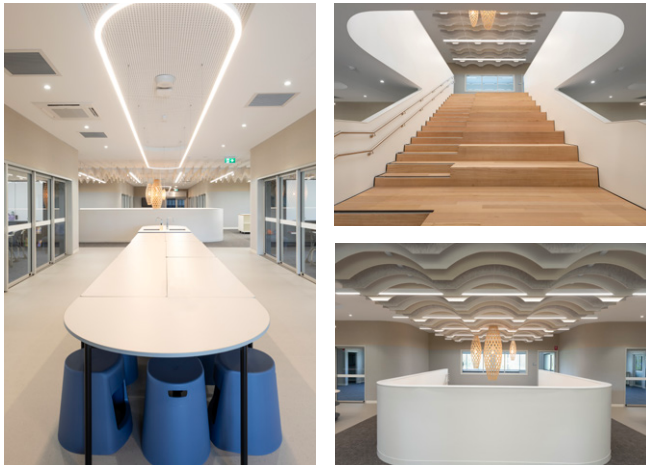
**COMMERCIAL SPECIALIST LININGS**  
**UNITED PLASTERING CONTRACTORS**  
**AUREUS STAGE 1,2,3,4 & 5**



**COMMERCIAL SPECIALIST LININGS**  
**AUSTRAL INTERIORS**  
**WESTERN SYDNEY**  
**INTERNATIONAL AIRPORT**



**COMMERCIAL SPECIALIST LININGS**  
**JA CROCKETT PTY LTD**  
**NEWCASTLE GRAMMAR SCHOOL**  
**PARK CAMPUS STAGE 1**



**COMMERCIAL SPECIALIST LININGS**  
**G&K LOONEY**  
**UNSW BIOMEDICAL**  
**SCIENCE BUILDING**



**2025**  
**AWCINSW**  
**AWARDS**  
**of**  
**EXCELLENCE**  
**SPONSORS**



THANK YOU FOR YOUR SUPPORT!

YOUR INDUSTRY, YOUR ASSOCIATION, YOUR AWARDS.





**CONTACT AWCINSW**

**02 9891 6188 | [enquiries@awcinsw.au](mailto:enquiries@awcinsw.au)**

[www.awcinsw.au](http://www.awcinsw.au)

5 Burbank Place, Norwest NSW 2153